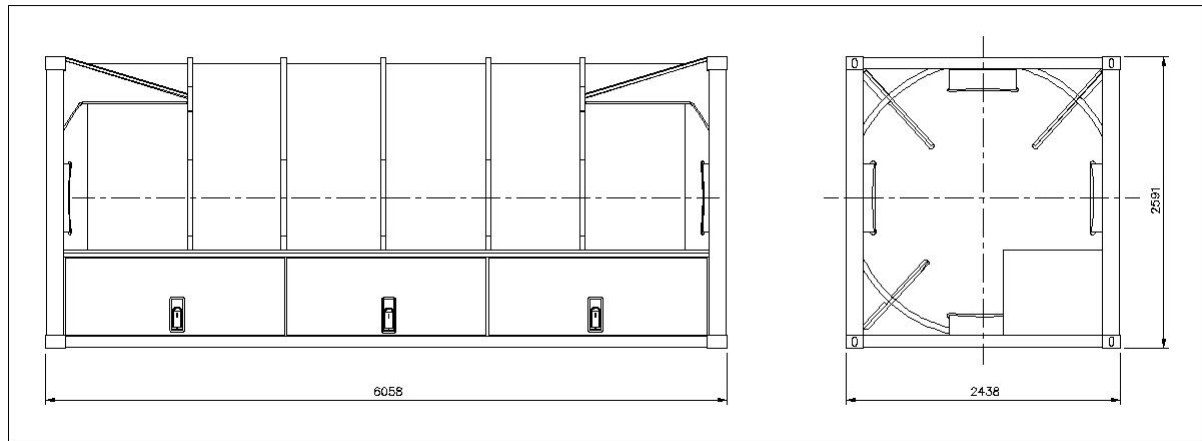


## Gungner ISO TANK CONTAINER Type 211-K2SV-23



### GENERAL DESCRIPTION

The CRYO AB Gungner ISO Tank Container Type 211-K2SV-23 is designed for intermodal transport of deeply refrigerated, liquefied non-flammable gases such as Oxygen, Nitrogen, Argon, LCO<sub>2</sub> and LN<sub>2</sub>O.

The Container design conforms to the requirements of ADR/RID product class 2 No. 7(a). The IMDG (IMO 7) requirements are also catered for.

The Container is of a double shell vacuum insulated construction. The outer shell is directly supported by the end frames, resulting in a robust, lightweight beam concept. The frames conform to the ISO 1496/III ICC standard and the CSC requirements.

The lockable control cabinet is located on the lower long side end and is protected by a crash frame. Armature system is easily operated and the cabinet includes a stainless steel drip pan.

The CRYO AB Gungner ISO Tank Container can further be equipped with a cryogenic pump and also a flow metering system, each including a lockable cabinet.

### TECHNICAL DATA

#### Overall dimensions:

(l × w × h)

6058 × 2438 × 2591 mm  
20' × 8' × 8.6'

#### Volume:

Gross volume at 20 °C

20 900 litres

Max filling ration

98 %

#### Pressure:

23 bar

#### Weights [kg]:

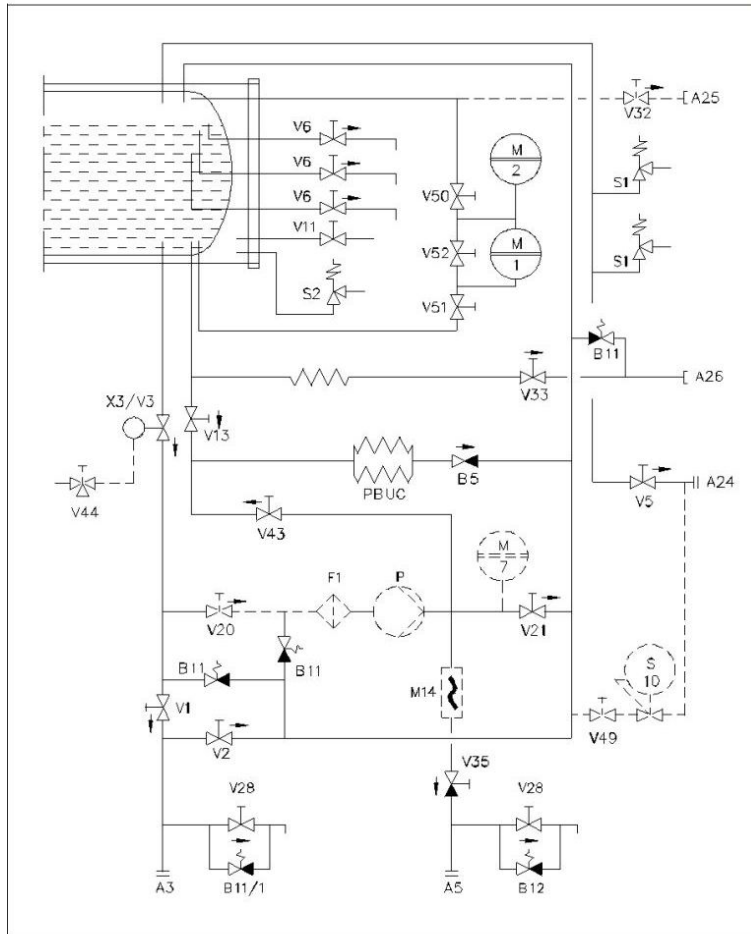
	IMDG	ADR/RID
Gross weight approved	30 480	35 000
Tare weight (excl. pump)	9 300	9 300
Max payload (excl. pump)	21 180	25 700

#### Product related weights:

Approximately values.

Product	IMDG (IMO-7)			ADR/RID		
	Fill ratio [%]	Payload [kg]	Gross weight [kg]	Fill ratio [%]	Payload [kg]	Gross weight [kg]
Nitrogen	98	16 410	25 720	98	16 410	25 720
Oxygen	90	21 180	30 480	98	23 160	32 460
Argon	73	21 180	30 480	89	25 700	35 000
LCO <sub>2</sub> (14 bar)	95	21 180	30 480	98	21 700	31 000
LN <sub>2</sub> O (12 bar)	97	21180	30 480	98	21 310	30 610





## Symbol / Function

A3	Filling/Emptying
A5	Draining through pump
A24	Equalization flange
A25	Analysis connection (gas)
A26	Analysis connection (liquid)
B5	Check valve
B11	Lines safety valve
B12	Lines safety valve
F1	Filter
M1	Liquid level gauge
M2	Tank pressure
M7	Pump pressure gauge
M14	Flow meter
P	Pump
PBUC	Pressure build-up vaporizer
S1	Safety valve, inner vessel
S2	Safety valve, outer vessel
S10	Road valve
V1	Bottom filling valve
V2	Top fill valve
V3	Shut off liquid
V5	Blow-off valve
V6	Try cock valve
V11	Vacuum test valve
V13	Pressure build-up valve
V20	Liquid to pump
V21	Return from pump
V28	Drain valve, hose
V32	Shut-off analysis valve
V33	Shut-off analysis valve
V35	Liquid from pump
V43	Pressure build-up valve from pump
V44	Pilot valve
V49	Shut-off road valve
V50	Instrument valve/M1
V51	Instrument valve/M1
V52	Instrument valve/M1
X3	Shut-off valve liquid

## HOLDING TIME

Holding time: 26 days LOX

Pressure increase 0-23 bar at 89% filling ratio

## NET EVAPORATION RATE

Less than 0.5%/24H (LOX)

## OTHER DATA

Inner vessel material Austenitic stainless steel

Outer jacket material Mild steel

International approvals: ADR/RID, IMDG (IMO 7), CSC, ISO 1496/III, TIR

Painting Anti-corrosion treatments, primer and top coat in one colour

## OPTIONS

- Approvals for national use in most European countries
- Pump with Y/D starter and automatic phase selector
- Pump with frequency converter
- Pressure and temperature sensing switch for protection of pump
- Stainless steel outer jacket
- Flow metering system
- Pressure raise regulator
- Customer logo and colour
- A24, Equalization connection
- V32/A25 Gas analysis

