

# CRYO AB

## HSE Strategy

Peter Sundin

CRYO AB Gothenburg 2010-05-25

THE LINDE GROUP

*Linde*

- **HSE Management Aims**
- **HSE Harmonisation Level of CRYO AB**
- **Success Factors for Leading HSE Performance**
- **Current Situation of HSE Management**
- **Current HSE Management Organization**
- **Strategic Initiatives**
  1. Improve the HSE Management Organization
  2. Improve the HSE Management System
  3. HSE Training Program
  4. Supervision and Inspection
- **HSE Performance Indicators**

# HSE Management Aims



Linde Engineering will play a **leading** role in the world market related to its core products. **Leading HSE performance** is the **pre-requisite** for achieving this. Therefore LE published its HSE Management Strategy which involves all LE Companies. To support and contribute to this process, CRYO AB set up the following HSE Management Aims:

- Establish a **strong and clear HSE Management Organization** as well as effective, efficient, transparent and integrated **HSE Processes**
- **Pro-actively care** for and preserve the health of our employees
- Fulfilling the HSE requirements shall be a pre-requisite to any business. Safety-related and environmental aspects shall be considered **in each decision we take**. CRYO AB shall become positive part of LE for the leading HSE performance.
- Comply with LE's relevant HSE requirements
- Further increase all employees' **awareness** for HSE through trainings
- All Managers and Group Leaders shall demonstrate their **strong visible leadership** towards HSE
- All employees shall be **familiar with** the relevant HSE requirements and processes, be actively **concerned, committed and involved in HSE**

# Degree of Harmonization



Country	Company Name	Level of Harmonisation		Sequence
		Current	Intended	
Sweden	CRYO AB Gothenburg	Low	Medium	

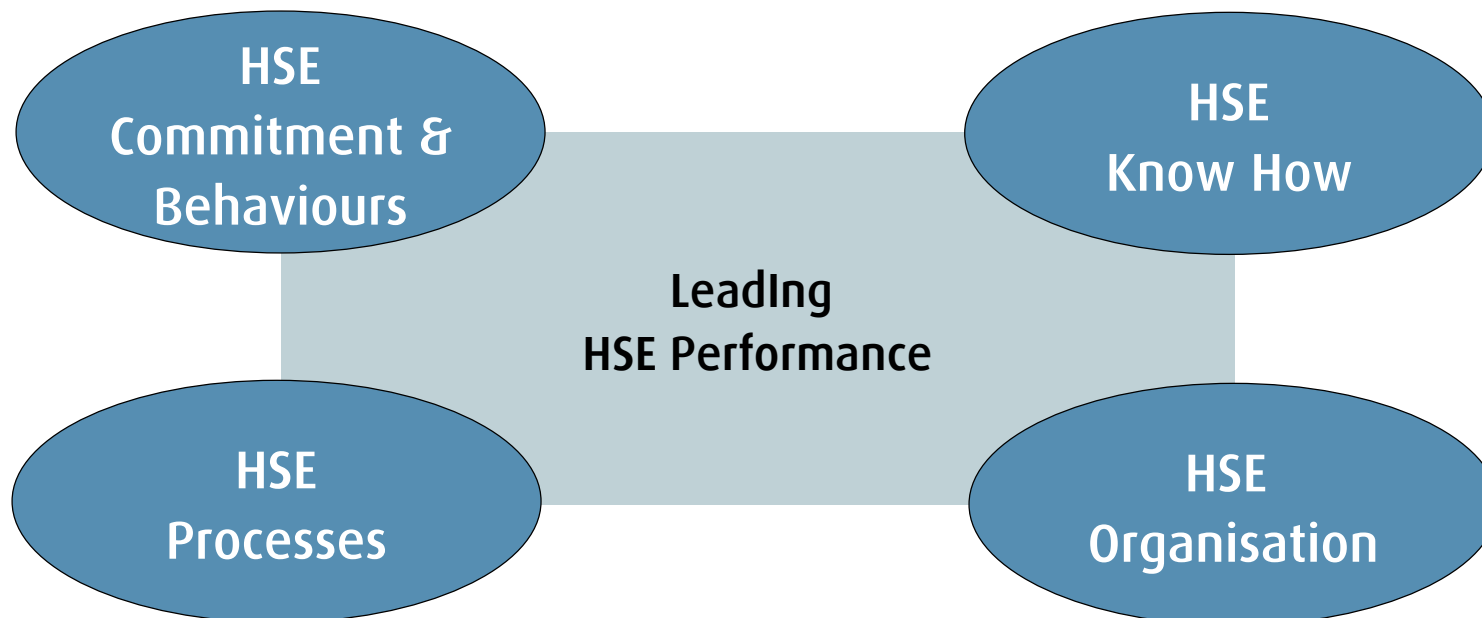
Level	Description
<b>Low</b>	<ul style="list-style-type: none"> <li>- reporting of incidents and HSE performance</li> <li>- minimum The Linde Group and LE Division HSE requirements apply</li> <li>- exchange of experience as deemed necessary</li> </ul>
<b>Medium</b>	<ul style="list-style-type: none"> <li>- implementation of aligned General HSE Processes</li> <li>- part of LE Division HSE audit program</li> <li>- regular exchange of experience</li> <li>- aligned global improvement process</li> </ul>
<b>High</b>	<ul style="list-style-type: none"> <li>- same as for "Medium" level</li> <li>- harmonized HSE processes and methods for plant project execution</li> <li>- OHSAS 18001 Certification 2010/11</li> </ul>

# Success Factors for Leading HSE Performance



- Visible leadership in HSE by managers
- Employees actively concerned, committed and involved in HSE

- Knowledge about legal, internal and client HSE requirements
- Management system approaches
- HSE technical knowledge/ expertise



- Efficient and effective
- Well-defined, transparent
- Integrated and consistent with other business processes

- Clear set-up of HSE organisation
- Full coverage of all business activities
- Well trained
- Sufficient capacity

# Current Situation of HSE Management



- One part time HSE Manager
- One HSE Head Coordinator
- HSE inspection and supervision on different levels:
  - QHSE-Committees meeting ones a month
  - Monthly inspections with Supervisors and workers Safety “ombudsman” of the fabrication to identify unsafe factors and arrange required improvements.
  - HSE as a topic of the daily Manufacturing Morning Meeting performed by the Manufacturing Managers to increase the employee’s awareness regarding HSE

## Fulfill Legal Requirements

# CRYO AB ORGANIZATION

**MANAGING DIRECTOR**  
Gunnar Lennerås

## MANAGEMENT TEAM

Gunnar Lennerås  
Håkan Stanryd  
Stefan Hellberg  
Gunnar Trygg  
John Granlund  
**Associate Members**  
Hans-Einar Forsberg  
Peter Sundin

**HSE MANAGEMENT**  
Peter Sundin

**QUALITY MANAGEMENT  
ADM DOCUMENTATION**  
Birger Öhman

**ADMINISTRATION & FINANCE**  
John Granlund

IT, Invoice & Logistics, Accounts payable, Internal service and Reception  
John Granlund

**Human Resources Administration**  
Peter Sundin

**Marketing & Sales Support**  
Gunnar Lennerås

**ENGINEERING**  
Hans-Einar Forsberg

R & D  
Engineering Group  
Hans-Einar Forsberg

Material & Calculation  
Marko Parkkonen

**PRODUCTION SUPPORT**  
Håkan Stanryd

Purchasing  
Markus Wennberg

Main planning, Production Preparation, Prod. Engineer. & Welding, Maintenance, Central Store  
Håkan Stanryd

**BUSINESS AREA  
AFTER SALES**  
Torgny Säfblad

Repair & Modernization  
Torgny Säfblad

Spare Part Sales  
Carina Macintosh

Container Rental  
Jenny Lindqvist

Workshop  
Torgny Säfblad

**BUSINESS AREA  
PLANTS & SPECIAL EQUIP**  
Gunnar Trygg

Sales & Project Management  
Lars Persson  
Johan Claesson  
Ove Norberg  
Nils-Henrik Hjälm Dahl

Site Manager

Sales Administration  
Johan M Andersson

Engineering Coordination  
Hans Lysér

Manufacturing & Site Coordinator  
Lars-Olof Svensson

**BUSINESS AREA  
DISTRIBUTION EQUIPMENT**  
Stefan Hellberg

Sales  
David Larsson  
Johan M Andersson

Engineering Coordination  
Philip Werner

Manufacturing  
Tony Andersson  
Markku Eriksson  
Mats Börjesson  
Håkan Karlsson

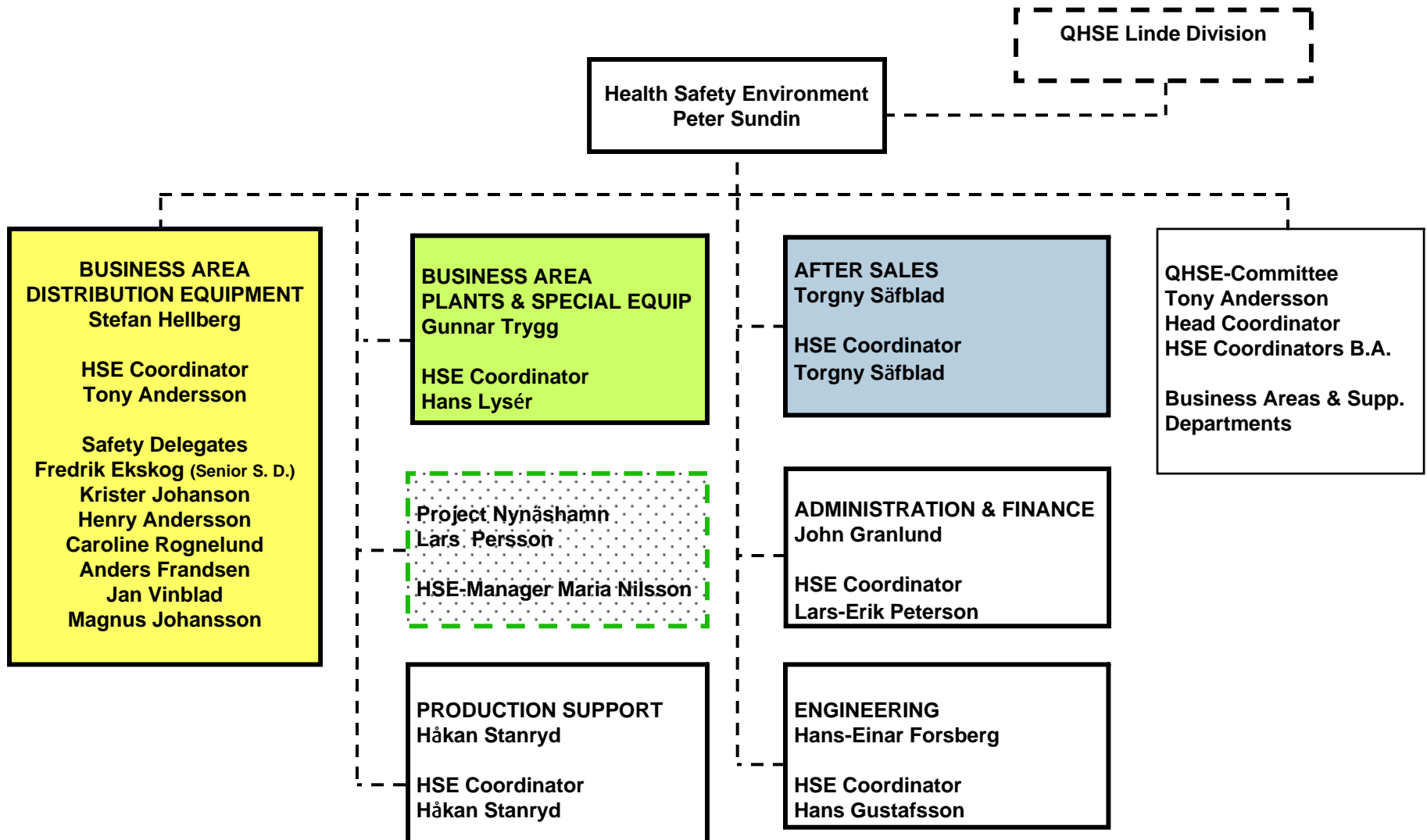
### Project Nynäshamn

Project Manager  
Lars Persson  
Mechanical Manager  
Hans Lysér  
Procurement Manager  
Claes Telning  
HSE Manager  
Maria Nilsson  
Site Supervisor  
Peter Langton



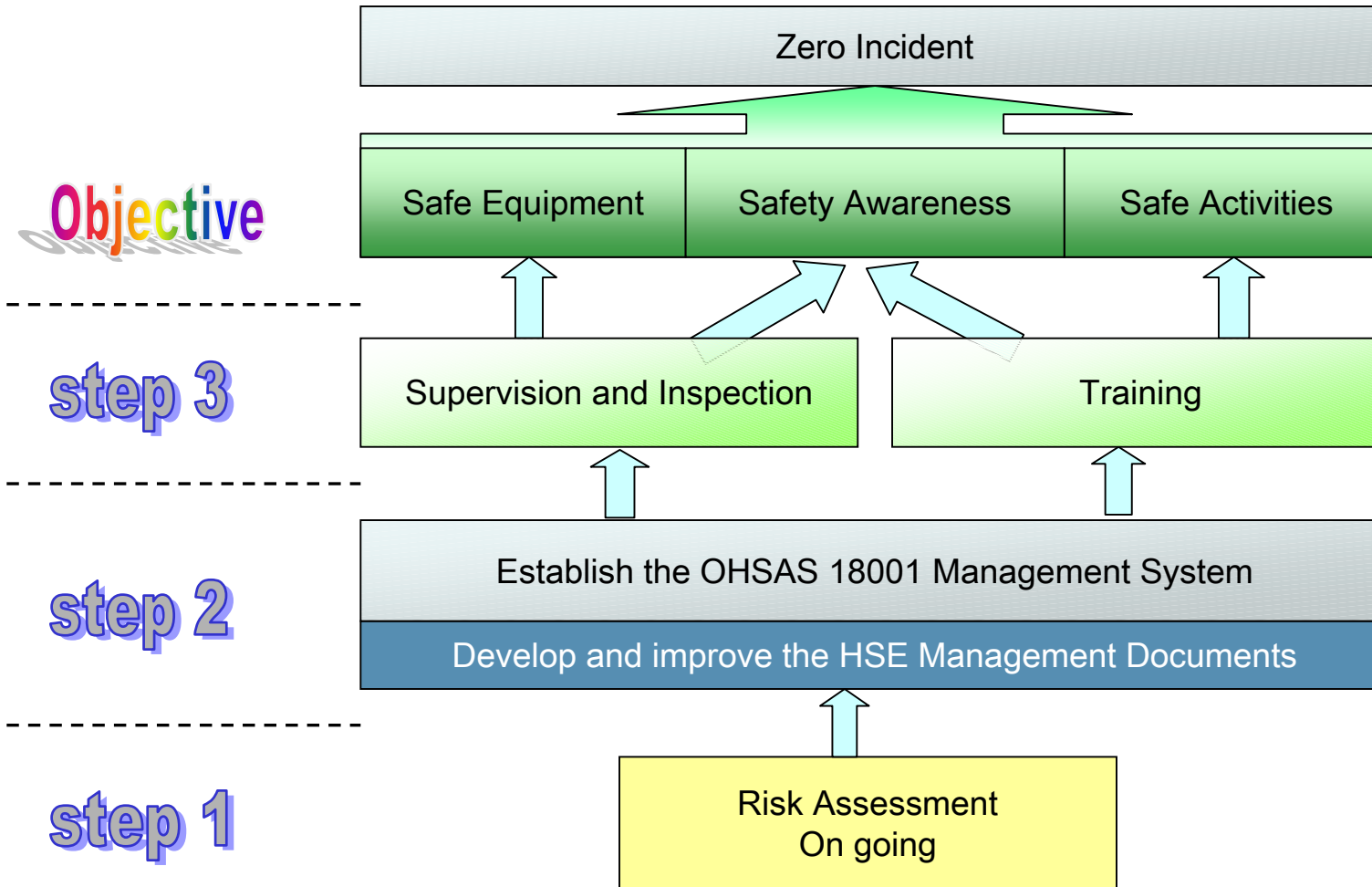
Sign:  Date of issue: May 25, 2010  
G Lennerås - Org.chart CRYO AB

# HSE Management Organisation



# Strategic Initiatives:

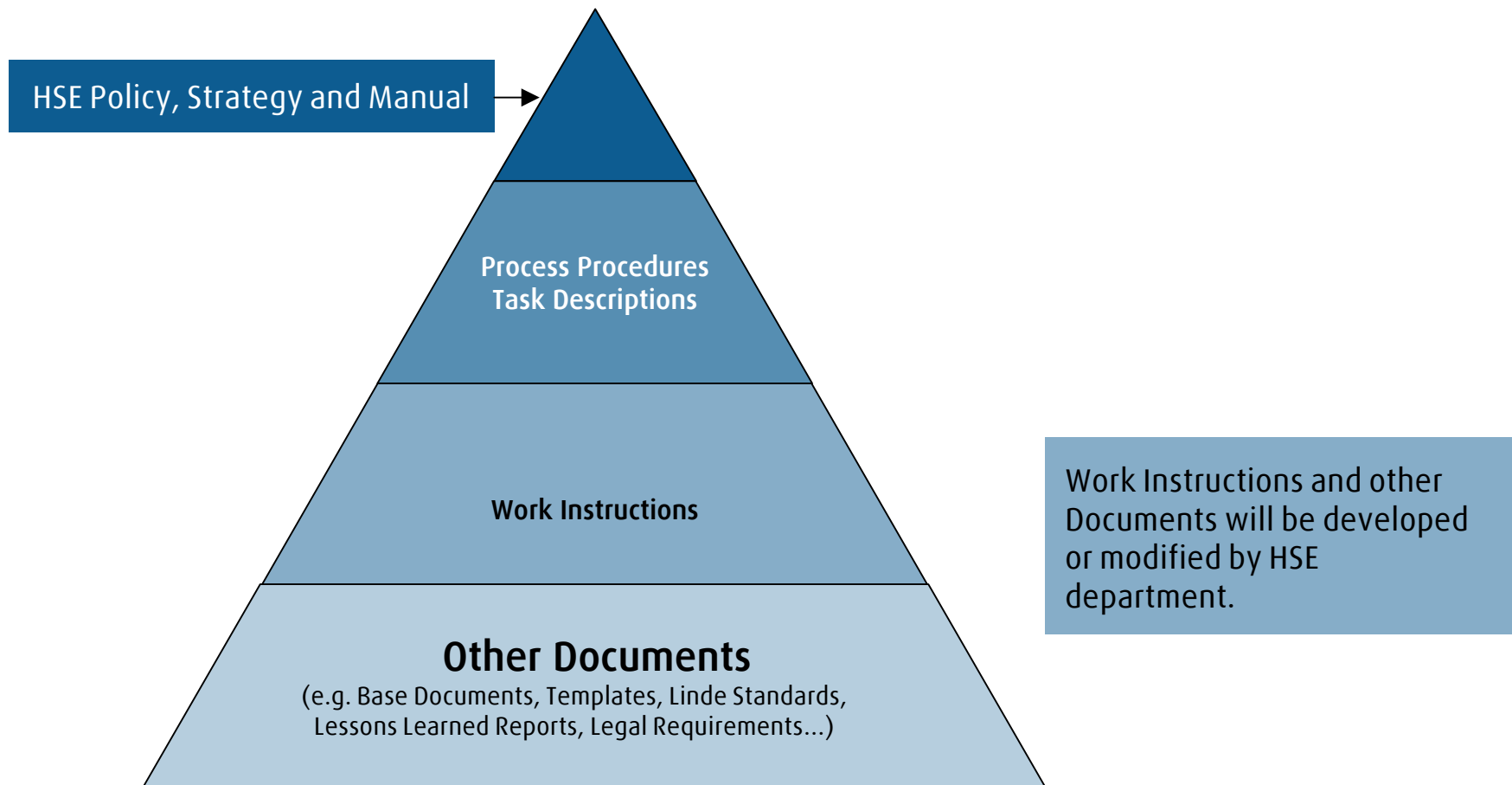
## 2. Improve the HSE Management System



## Strategic Initiatives:

### 2. Improve the HSE Management System

CRYO AB will improve existing and develop new relevant documents of the HSE Management System in accordance with legal and LE requirements



# Strategic Initiatives:

## 2. List of CRYO AB HSE Activities

THE LINDE GROUP







No.	Name of Process Procedure	Prepared by	Due Date	Current Status
1	Risk Assessment, existing workshop	F.Ekskog	On going	
2	Incident Reporting and Investigation	P. Sundin	2010-12-31	
3	Delegation of Employees Duties & Responsibilities	T. Andersson	On going	
4	Fire and Explosion Protection	L. Ivarsson	2010-06-31	
5	Measurement and Control	P. Sundin	2010-12-31	
6	Work Permit System	T. Andersson	2010-10-31	

● Finished     
 ● In Preparation     
 ● Not Started

# Strategic Initiatives:

## 2. List of CRYO AB HSE Activities

No.	Name of Process Procedure	Prepared by	Due Date	Current Status
7	HSE Instruction Training	P. Sundin + B. Andreasson	2010-12-31	
8	Work Equipment Management TEKLA	H. Stanryd	On going	
9	Hazardous Materials Management	P. Sundin	2010-12-31	
10	Emergency Preparedness	P. Sundin	2010-12-31	

● Finished
 ● In Preparation
 ● Not Started

## Strategic Initiatives:

### 3. Realize the HSE Training Program

We will provide training to:

- **top management** participates and show visible leadership by actively involve in all HSE and OHSAS 18001 improvement process.
- **all managers** in order to enable them to demonstrate their strong visible leadership towards HSE (internal audits/check-ups)
- **all workers** to make them familiar with the relevant HSE regulations, to increase their HSE awareness and to actively involve them in the HSE improvement process (5S, Quality projects, Risk Assessments, OHSAS 18001, etc.)

## Strategic Initiatives:

### 3. Realize the HSE Training Program – Sporadic Trainings

Training for	HSE Training Topics	Trainer	Due Date
HSE Managers HSE Coordinators	<ul style="list-style-type: none"> <li>▪ HSE Education</li> <li>▪ OHSAS 18001</li> </ul>	External	2010-10-15
Managers	<ul style="list-style-type: none"> <li>▪ Relevant new HSE Procedures</li> </ul>	HSE Manager	Ongoing
Supervisors	<ul style="list-style-type: none"> <li>▪ Legal HSE Requirements</li> <li>▪ HSE Task Description</li> </ul>	HSE Manager	Oct. 2010
Employees, Workers	<ul style="list-style-type: none"> <li>▪ Legal HSE Requirements</li> <li>▪ Relevant HSE Procedures and Requirements</li> </ul>	Supervisors (HSE Man)	Ongoing
Internal auditors'	<ul style="list-style-type: none"> <li>▪ Internal Audit qualification for OHSAS 18001</li> </ul>	External	Oct. 2010

# Strategic Initiatives:




## 3. Realize the HSE Training Program – Regular Trainings

Training for	HSE Training Topics	Trainer	Frequency
Managers	<ul style="list-style-type: none"><li>▪ HSE Strategy</li><li>▪ Visible Leadership Skills</li><li>▪ Established HSE Procedures and how to supervise the implementation of HSE procedures</li></ul>	HSE Manager	Once a Year
Supervisors & Managers	<ul style="list-style-type: none"><li>▪ Basic relevant HSE Knowledge and important procedures within their area of responsibility</li></ul>	HSE Manager or External Trainer	Once a Year & on demand
All staff	<ul style="list-style-type: none"><li>▪ Fire Drill and Fire Protection</li></ul>	Fire protection responsible	Once a Year

## Strategic Initiatives:

### 4. Improve the Supervision and Inspection

Execute inspections and supervision on different levels to improve the overall HSE situation and awareness of all employees

Type of Inspection	Frequency	Participants	Due Date	Current Status
Workshops inspection Walk	Daily	Supervisors	On going	
Safety Inspection	Monthly	Supervisors and workers safety delegates	On going	
Top Management Inspection	Monthly	Managing Director HSE Manager Business area manager Quality manager	2010-06-30	

● Always performed   
 ● Sporadical performed   
 ● Not performed yet

# HSE Performance Indicators:

## 1 Indicator of LTIR

THE LINDE GROUP



Measurement: By means of safety metrics reporting

	<b>LTIR</b>				<b>LTI</b>	
	2008		2009		2010	
	Target	Outcome	Target	Outcome	Target	Outcome
<b>CRYO AB</b>	15	22,3	13,4	10,2	4	-

# HSE Performance Indicators:

## 2. Leading Indicators

THE LINDE GROUP



Items	WHAT to Achieve
Risk Assessments	Risk Assessments are to be completed or regularly updated, documented and implemented

**Measurement:** Target fulfilment to be expedited by HSE Manager and to be reported to the responsible HSE Manager LE Division.

**Started the process for achieving OHSAS 18001 Certification 2010/2011**

**HSE Education**

THE LINDE GROUP

*Linde*

Thank you  
for  
your attention

CRYO AB, Gothenburg, Sweden