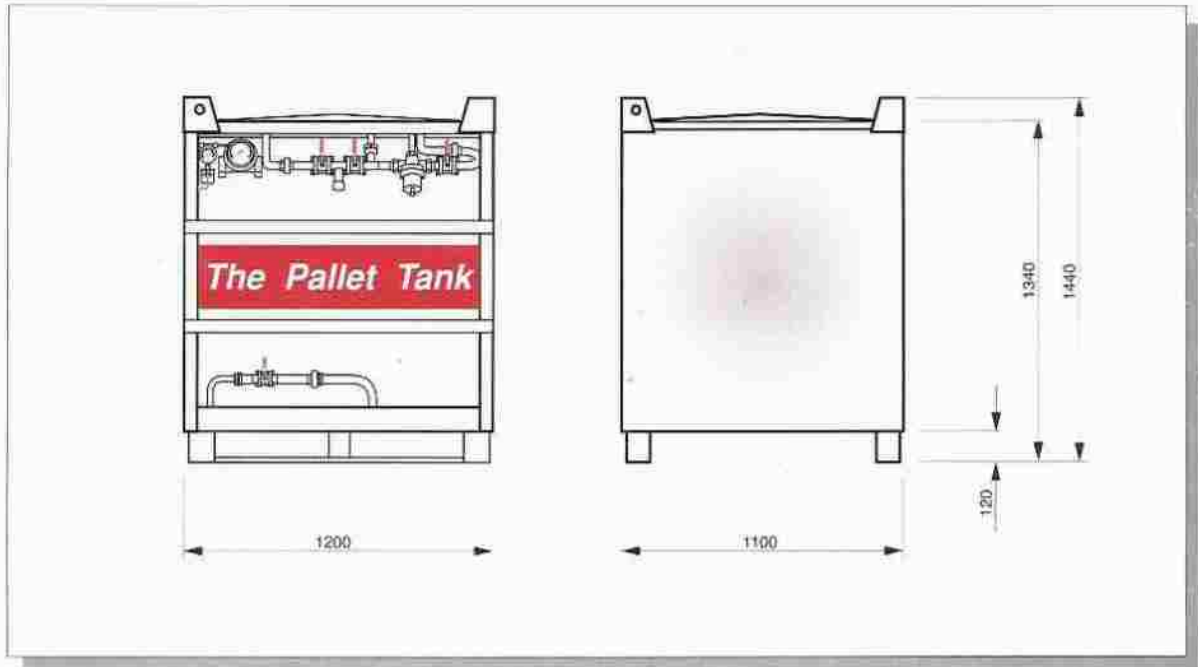


PALLET TANK

Type 7-KXSM-18



GENERAL DESCRIPTION

The AGA Pallet Tank is the basis of a novel distribution philosophy, increasing the handling capacity of liquified gases within the cylinder distribution networks. The AGA Pallet Tank enables the gas to be filled, transported, delivered and emptied into the customer production line by means of the same unit.

By using the AGA Pallet Tank the user gets access to a gas volume of up to five times as large as that of a cylinder bundle and has proven to be the ideal tool for applications requiring 800-2000 Nm³/month.

As a result of the unique design following the worldwide acknowledged pallet handling concept the AGA Pallet Tank is easily handled and stackable while in the terminal.

The application areas are practically unlimited. The flexibility achieved by using the AGA Pallet Tank makes it ideal for temporary installations, spot market, hi-tech and high-purity applications.

The well-known PER-regulator (Pressure build-up, Economizer and pressure Relief) includes the automatic control of the tank performance. The combination of the AGA Pallet Tank and the innovative AGA-CRYO Pallet Tank Filling station simplifies as well as reduces the time required for the filling operation.

VOLUME

Gross volume	666	l
Max filling volume (95%)	627	l

WEIGHT

Each individual AGA Pallet Tank tare weight is marked on the identification plate allowing optimized filling.

Tare weight (approx.)	560	kg
Approved total weight	1550	kg

MATERIAL

The inner vessel, outer jacket, pipe work and valves as well as the exterior are manufactured in austenitic stainless steel.

PRESSURE

Max working pressure	17.5	bar(g)
----------------------	------	--------

EVAPORATION RATE

Determined within 24h-(O ₂)	<1	%
---	----	---

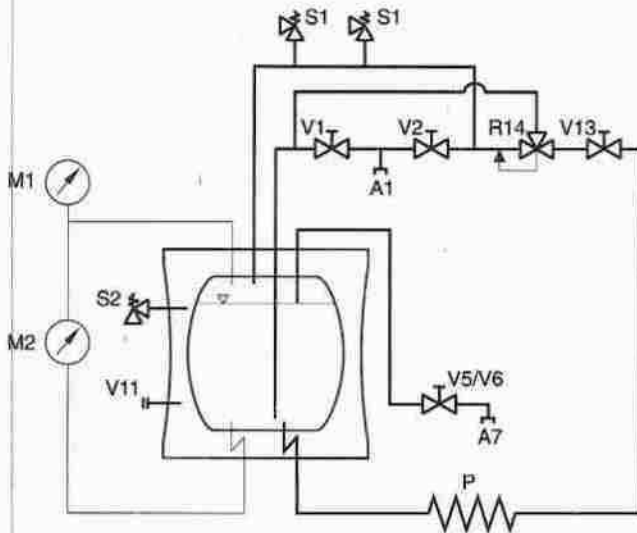
HOLDING TIME

at 95% filling ratio-(LOX, cold liquid)	5	days
at 80% filling ratio-(LOX, cold liquid)	20	days

CRYO AB

Technical Specification

FLOW DIAGRAM



LEGEND

- A1 Tank filling and discharge connection
- A7 Gas phase connection
- M1 Pressure indicator
- M2 Level indicator
- P Pressure build-up coil
- R14 PER-regulator
- S1 Safety valves, inner vessel
- S2 Safety valve, outer jacket
- V1 Shut-off valve, filling and liquid discharge
- V2 Shut-off valve, filling and gaseous discharge
- V5/V6 Shut-off valve, maximum filling level valve and vent
- V11 Vacuum valve
- V13 Shut-off valve, pressure build-up coil

WITHDRAWAL CAPACITY

Standard equipped **Pressure build-up coil;**

Liquid withdrawal - LIN at 2 bar	650	l/h
Gaseous withdrawal - GAN cold gas at 6 bar	10	Nm ³ /h

Optional **Integrated design vaporizer;**

Gaseous withdrawal - GAN cold gas at 10 bar	20	Nm ³ /h
--	----	--------------------

PRODUCT RELATED WEIGHTS

95% filling ratio, (cold liquid at 1 atm.)

Liquid contents	Payload [kg]	Total weight [kg]
LOX	714	1274
LIN	506	1066
LAR	877	1437
LCO ₂	689	1249
LN ₂ O	665	1225

OPTIONS AND ACCESSORIES

- Integrated vaporizer
- External vaporizer
- Discharge terminal with twin external vaporizer
- Pressure limiting kit for liquid withdrawal. "Milk man service"
- Swagelok liquid connection for gas analyse
- Tank- and hose connections
- Hoses, valves, seals and complete pipe and valve arrangements
- Automatic Pallet Tank filling station